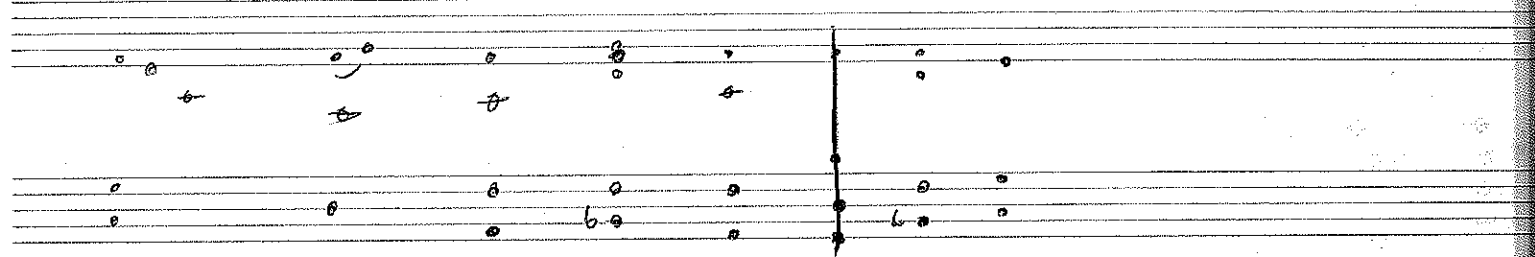
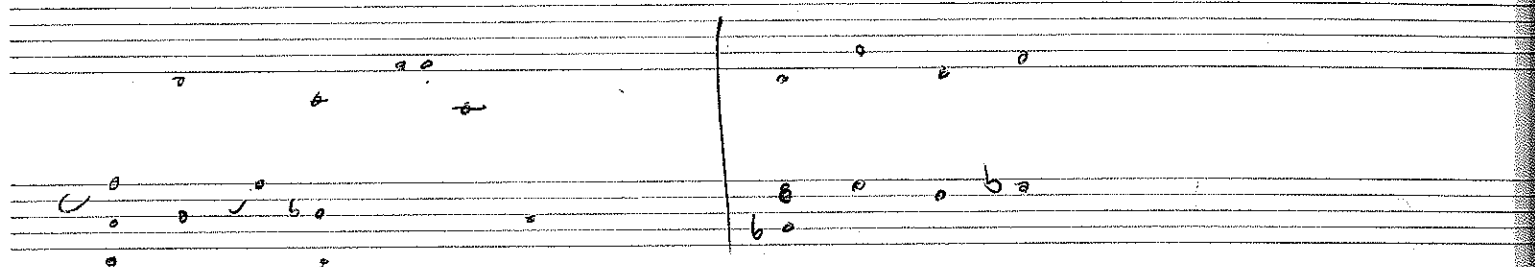
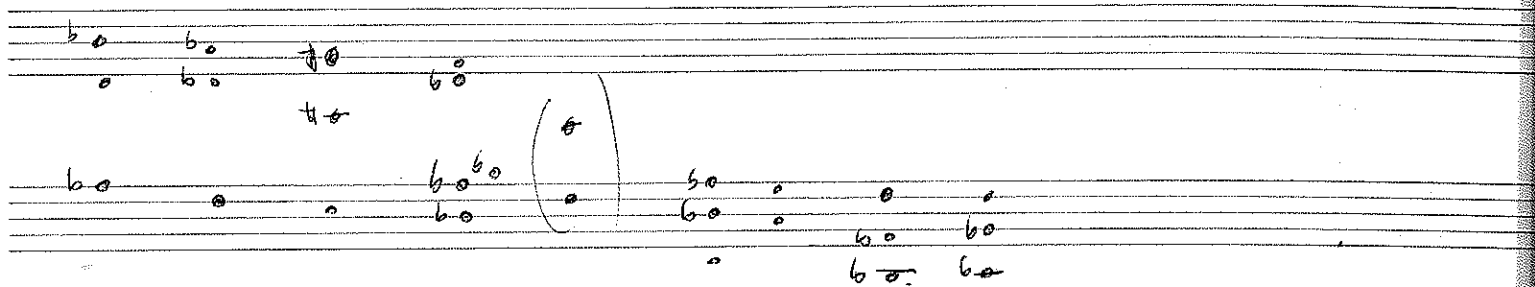
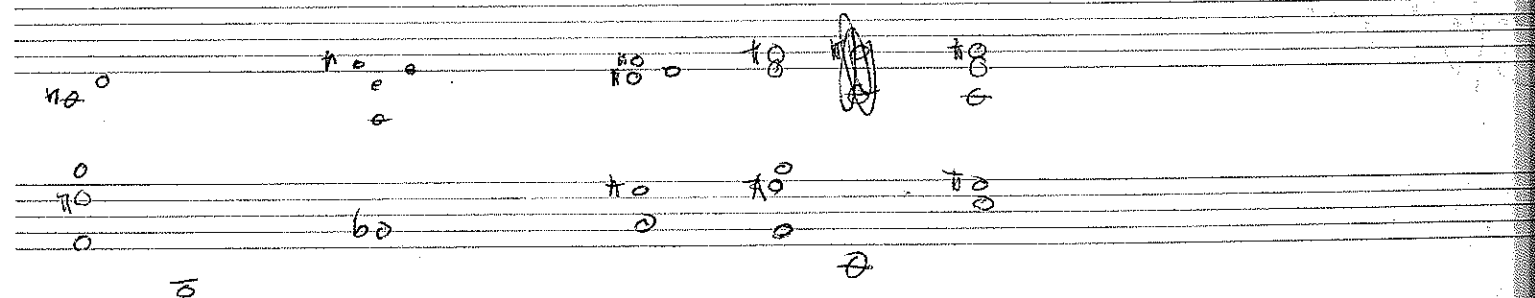




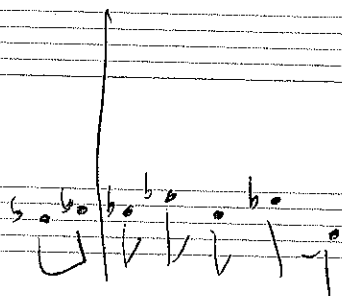
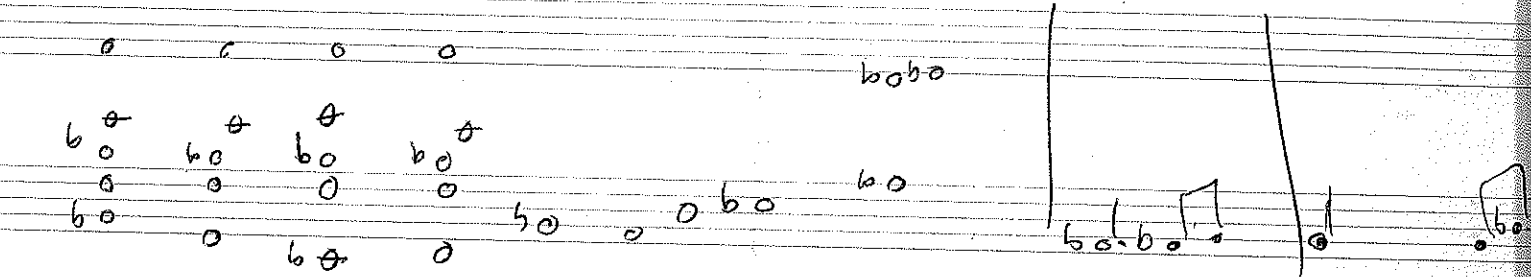
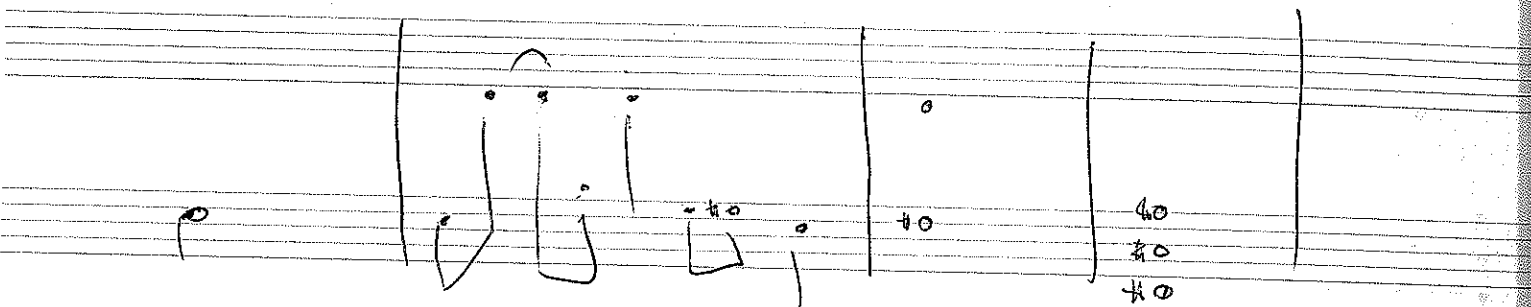
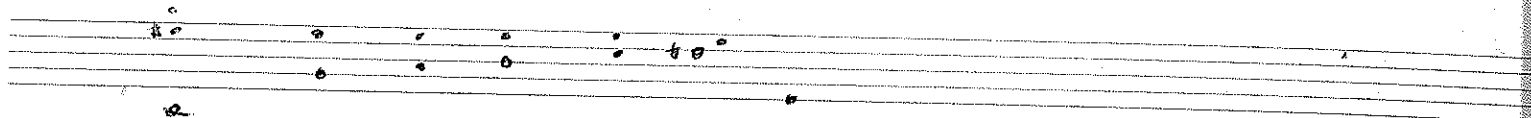
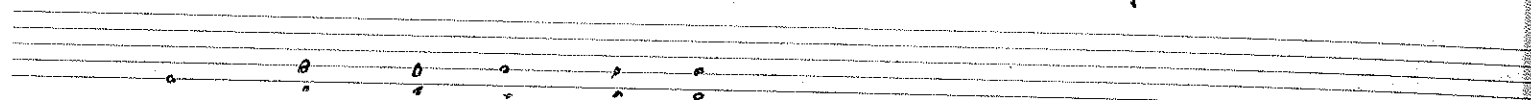
14/12/98



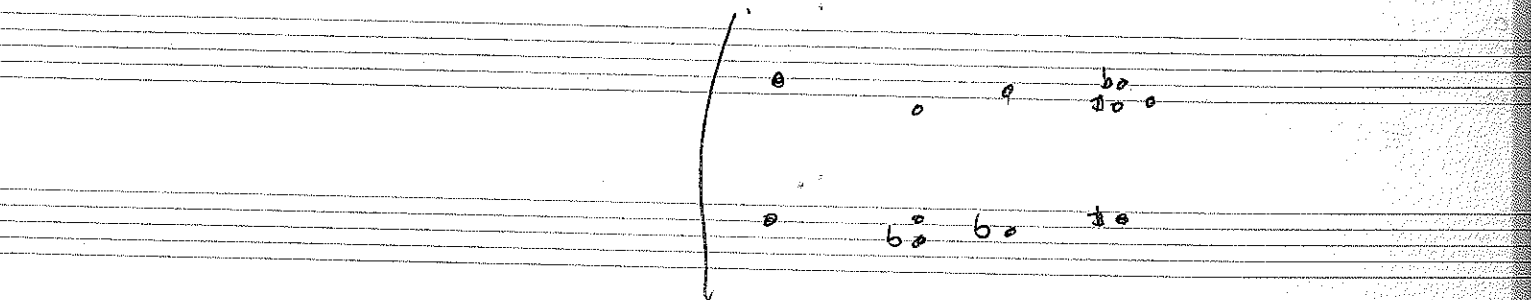
the BLACK OIL in the shed  
whole tone



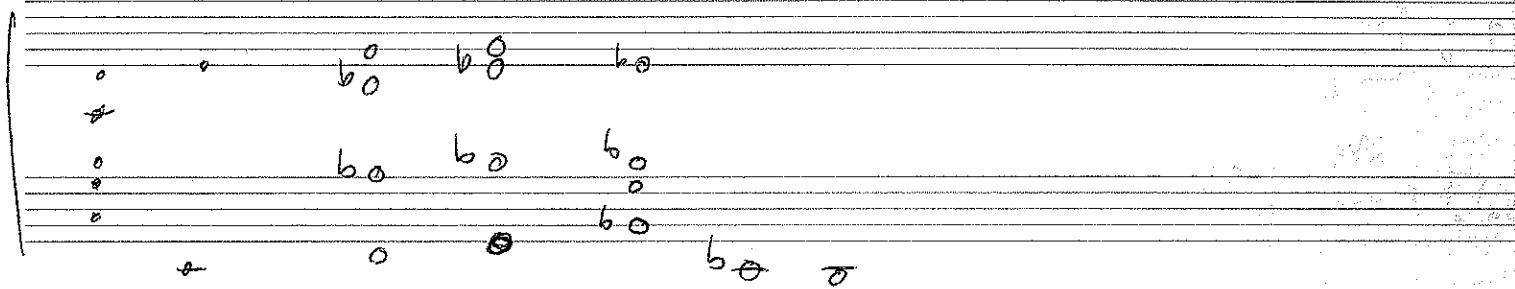
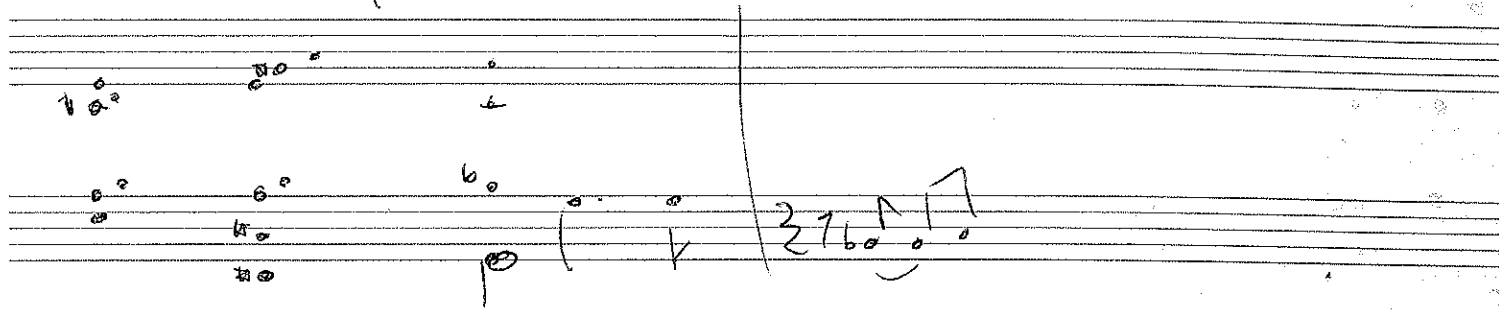
16/12



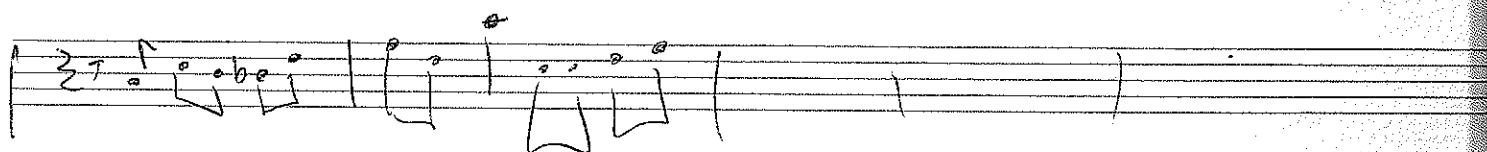
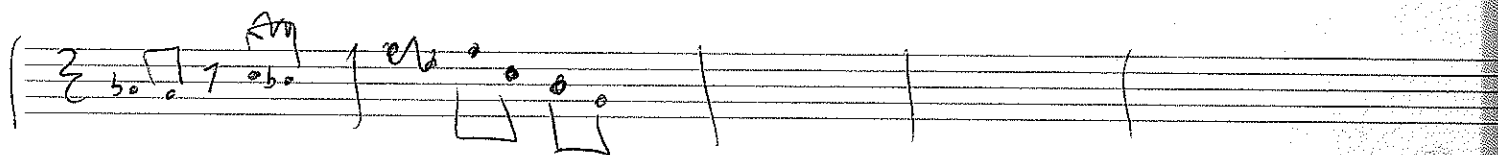
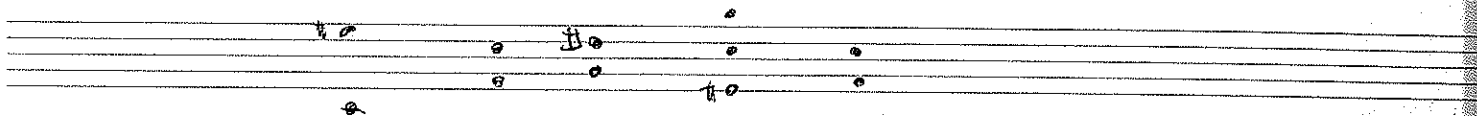
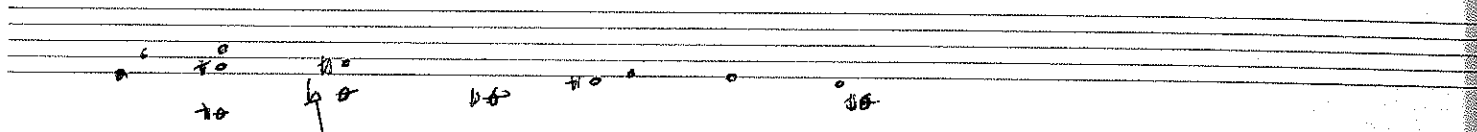
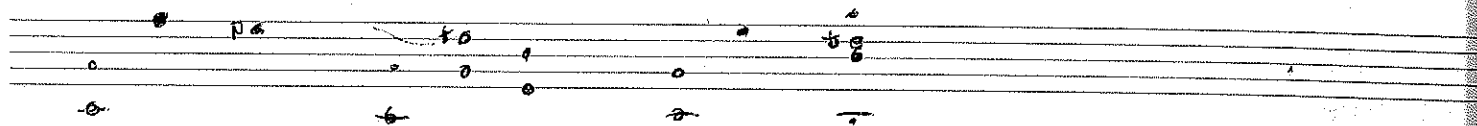
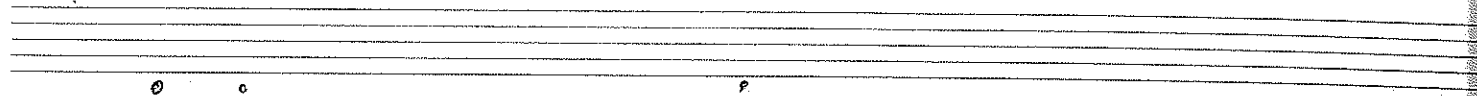
251 F-7



16/12



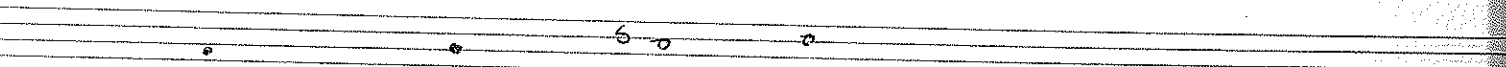
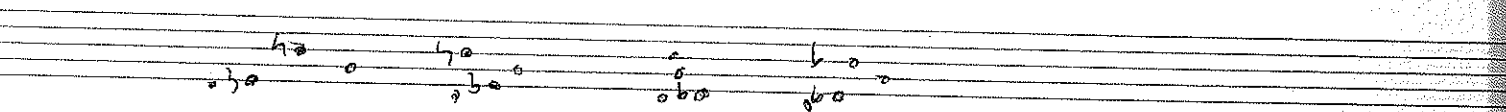
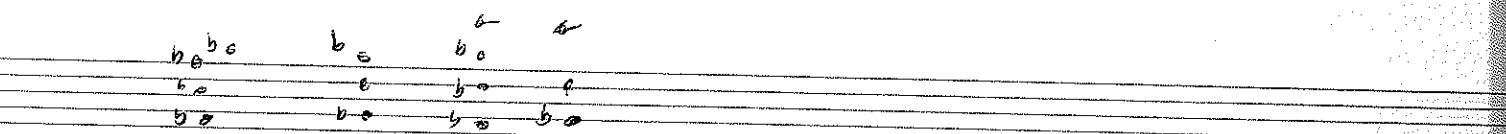
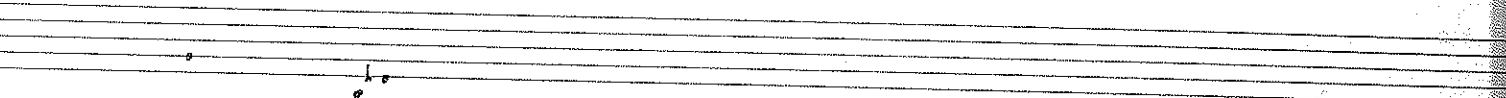
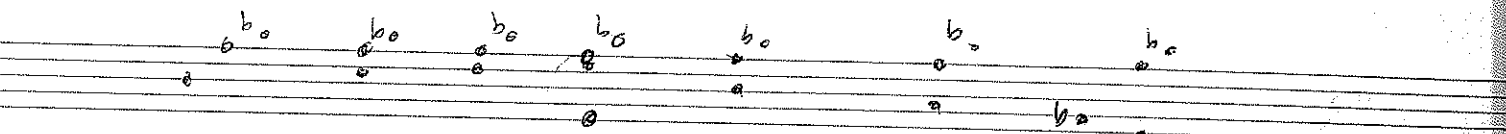
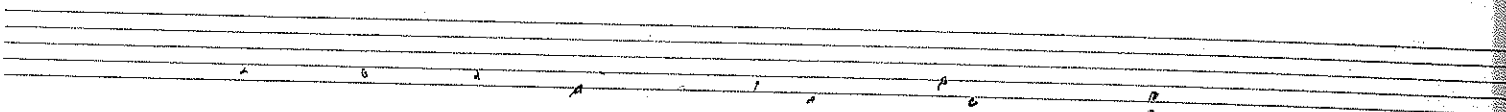
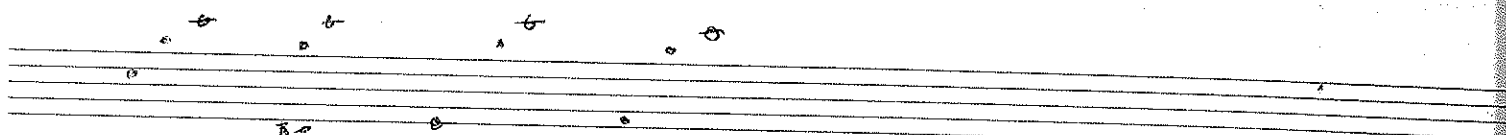
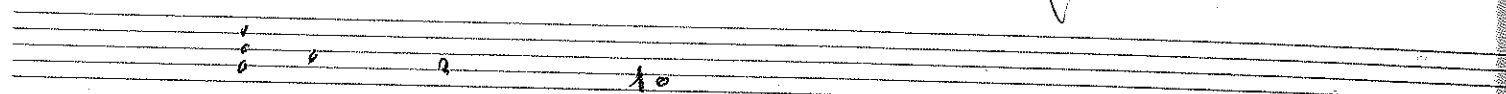
P<sub>3</sub>







how I know what they mean



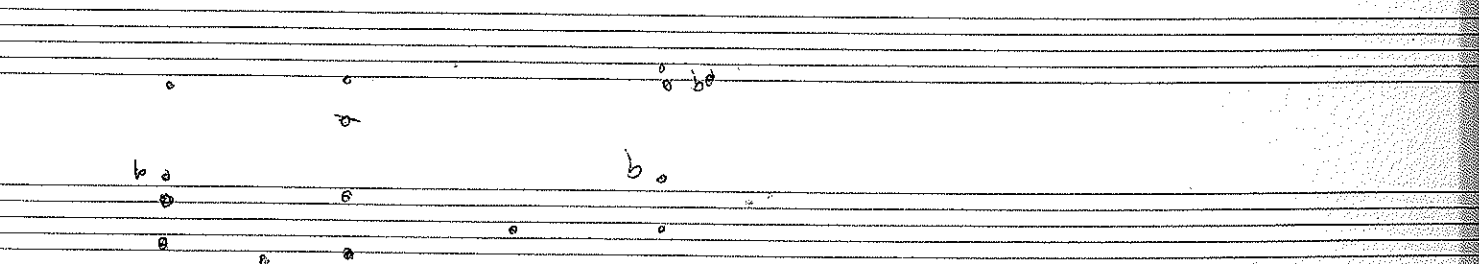
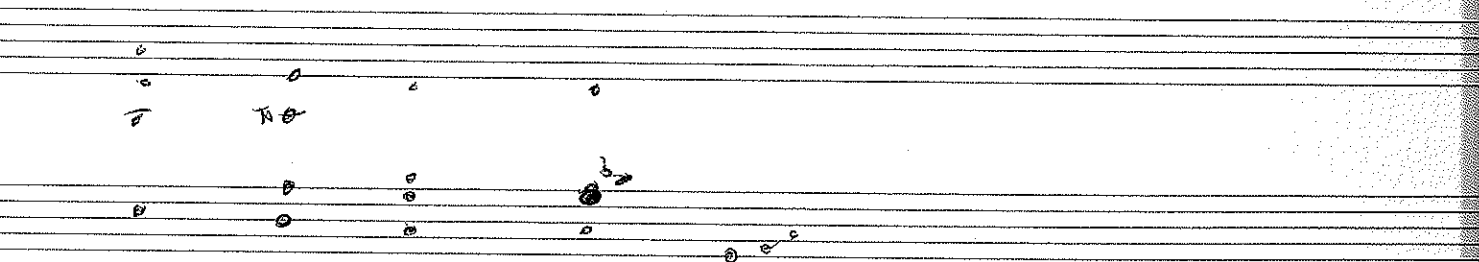
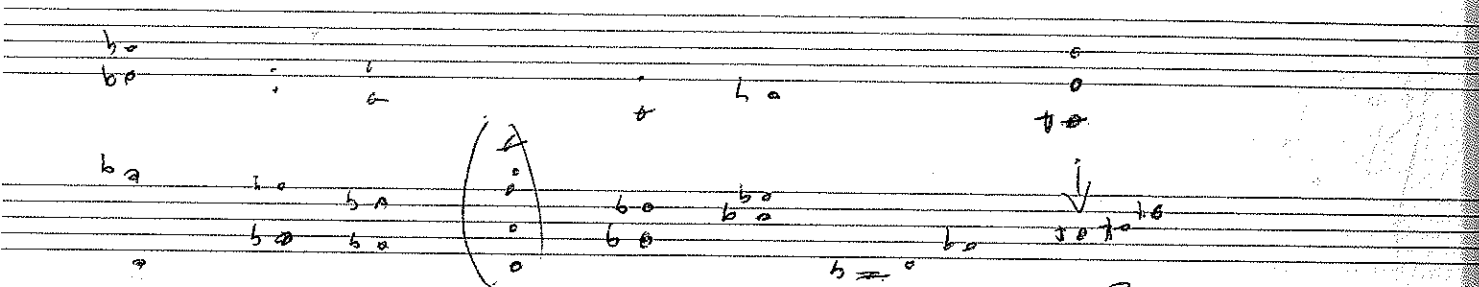
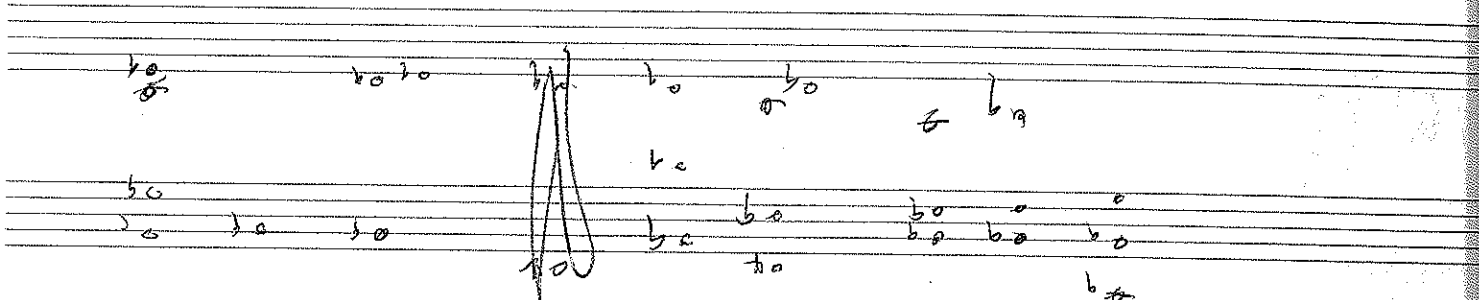
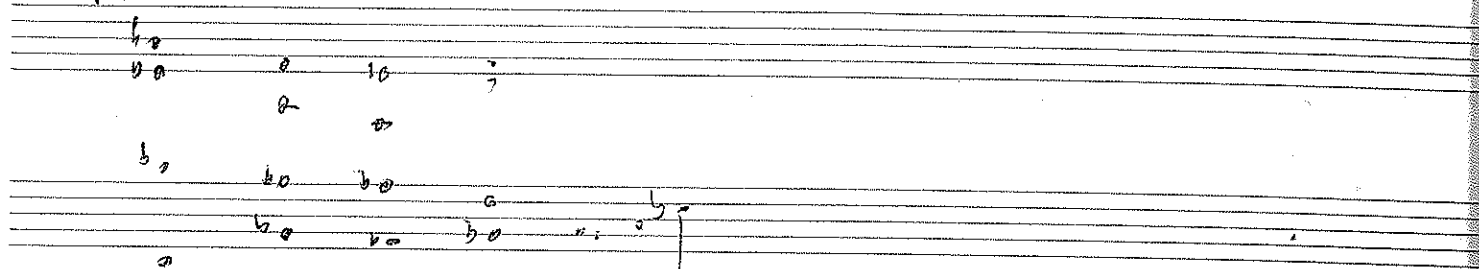
Handwritten musical notation on three staves. The top staff contains a few scattered notes and a sharp sign. The middle and bottom staves contain more notes, some grouped together. The notation is sparse and appears to be a sketch or a specific part of a larger piece.

Handwritten musical notation on a single staff, divided into four measures by vertical bar lines. Above the first measure is a handwritten 'G' and above the second is an 'F'. The notation includes various notes, some with stems, and a few accidentals. The first measure has a '7' and a 'U' written below it. The fourth measure has a small 'b' below it.

Handwritten musical notation on a single staff, starting with a treble clef. It features a series of notes, some with stems, and a few accidentals. The notation is somewhat abstract and appears to be a sketch or a specific part of a larger piece.

A series of empty musical staves, likely for additional notation or as a placeholder for another section of the piece.

P5



86

Handwritten musical notation on two staves. The first staff contains two measures of music, each with a whole note and a flat symbol (b). The second staff contains a series of notes, including a whole note with a flat symbol (b), a half note, and a quarter note, followed by a double bar line.

Handwritten musical notation on two staves. The first staff contains two measures of music, each with a whole note and a flat symbol (b). The second staff contains a series of notes, including a whole note with a flat symbol (b), a half note, and a quarter note, followed by a double bar line.

248

P7

28

238

A handwritten musical score consisting of six staves. The notation is in a single system, likely for a piano. The first staff begins with a treble clef and a key signature of two flats (B-flat and E-flat). The music is written in a style that combines standard musical notation with some shorthand or shorthand-like symbols. The notation includes various note values (quarter, eighth, and sixteenth notes), rests, and dynamic markings. There are several instances of notes with flat symbols (b) and some notes with sharp symbols (sharp). The second staff contains a measure with a double bar line and a repeat sign. The third staff has a measure with a double bar line and a repeat sign. The fourth staff has a measure with a double bar line and a repeat sign. The fifth staff has a measure with a double bar line and a repeat sign. The sixth staff has a measure with a double bar line and a repeat sign. The notation is somewhat messy and appears to be a working draft or a sketch.

22 dec

Handwritten musical notation on two staves. The notation includes various notes, rests, and accidentals (sharps, flats, naturals). The first staff has a treble clef and the second has a bass clef. The notes are mostly half notes and quarter notes, with some beamed eighth notes. There are several accidentals, including flats and naturals, scattered throughout the notation.

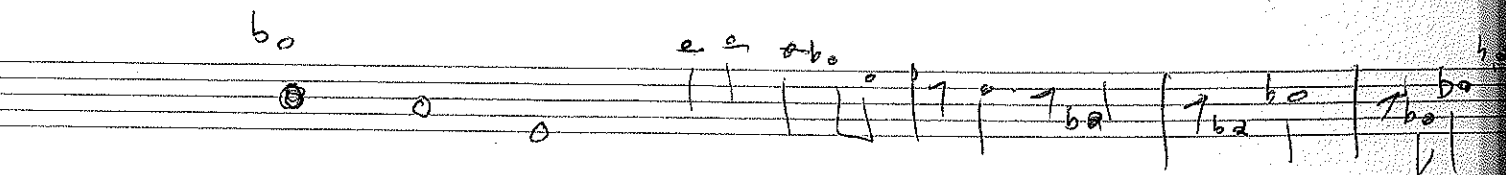
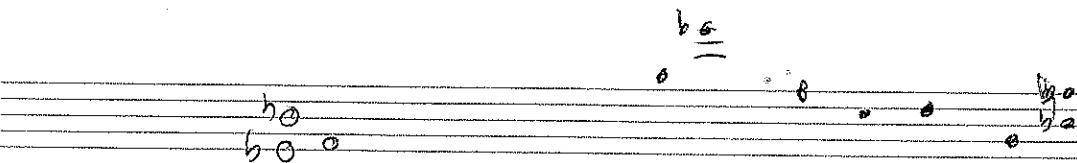
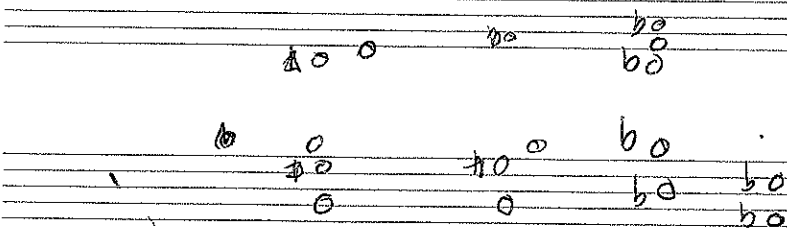
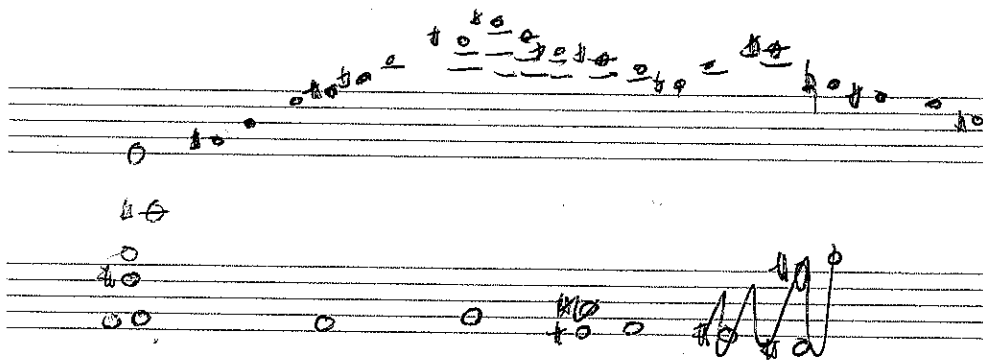
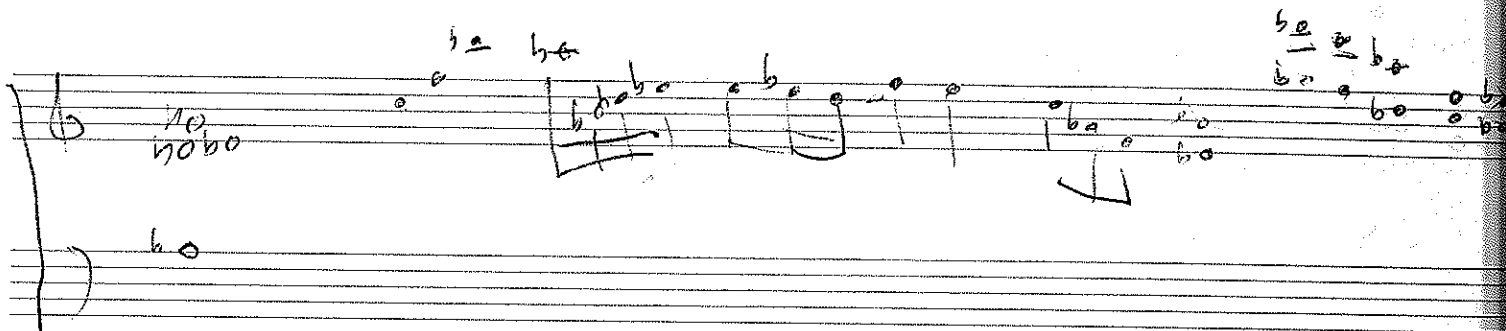
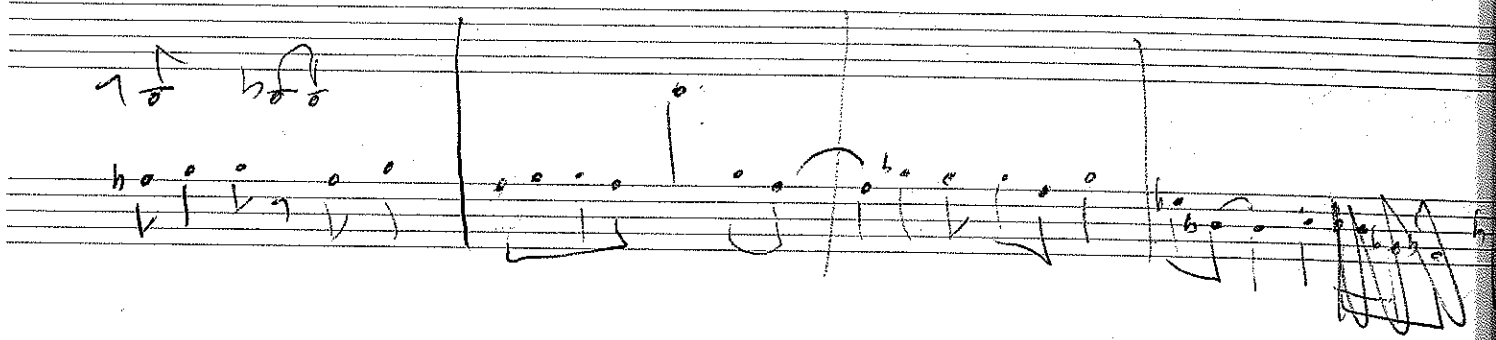
Handwritten musical notation on two staves. The notation includes various notes, rests, and accidentals. The first staff has a treble clef and the second has a bass clef. The notes are mostly half notes and quarter notes, with some beamed eighth notes. There are several accidentals, including flats and naturals, scattered throughout the notation.

Handwritten musical notation on two staves. The notation includes various notes, rests, and accidentals. The first staff has a treble clef and the second has a bass clef. The notes are mostly half notes and quarter notes, with some beamed eighth notes. There are several accidentals, including flats and naturals, scattered throughout the notation. A large, stylized bracket or flourish is visible on the right side of the staves.

Handwritten musical notation on two staves. The notation includes various notes, rests, and accidentals. The first staff has a treble clef and the second has a bass clef. The notes are mostly half notes and quarter notes, with some beamed eighth notes. There are several accidentals, including flats and naturals, scattered throughout the notation. A large, stylized bracket or flourish is visible on the right side of the staves.

Handwritten musical notation on two staves. The notation includes various notes, rests, and accidentals. The first staff has a treble clef and the second has a bass clef. The notes are mostly half notes and quarter notes, with some beamed eighth notes. There are several accidentals, including flats and naturals, scattered throughout the notation. A large, stylized bracket or flourish is visible on the right side of the staves.

24 Dec 98



Handwritten musical notation on two staves. The top staff uses a treble clef and contains a complex sequence of notes with many accidentals (flats and naturals). The bottom staff uses a bass clef and contains a similar sequence of notes with accidentals. There are some additional markings below the staves, including a small '5' and some symbols.

Handwritten musical notation on a single staff with a treble clef. It contains a few notes with accidentals.

Handwritten musical notation on a single staff with a bass clef. It contains a few notes with accidentals.

Handwritten musical notation on two staves. The top staff uses a treble clef and the bottom staff uses a bass clef. Both staves contain notes with accidentals.

5/1/99

Handwritten musical notation on two staves. The top staff has a treble clef and the bottom staff has a bass clef. The notation includes notes with accidentals and some symbols like 'L' and '2'.

Handwritten musical notation on two staves. The top staff has a treble clef and the bottom staff has a bass clef. The notation includes notes with accidentals and some symbols like 'L' and '2'.



88

i haven't felt like this for so long

and it's all because of you

sleep of innocence

old times

old surfs

when penthouse girls  
and friends

all the girls looked sixteen again

it will always be the same

the DX7

the octaver

but I wake

and i'm here again

i feel the naked flame

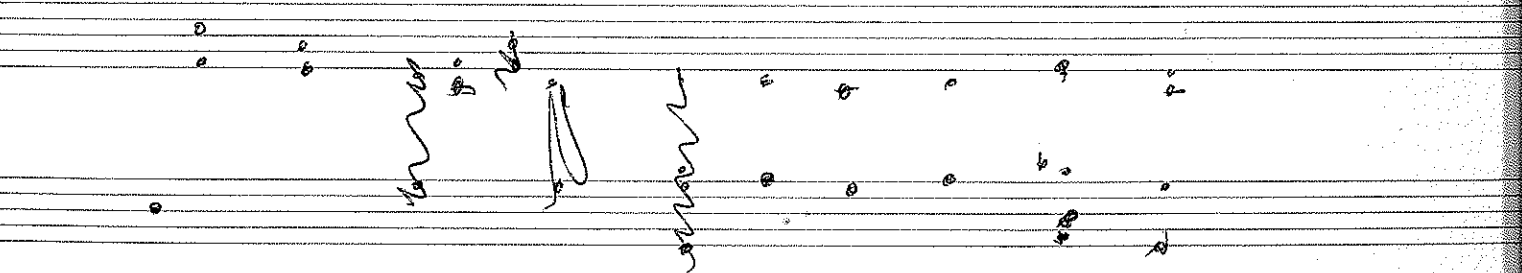
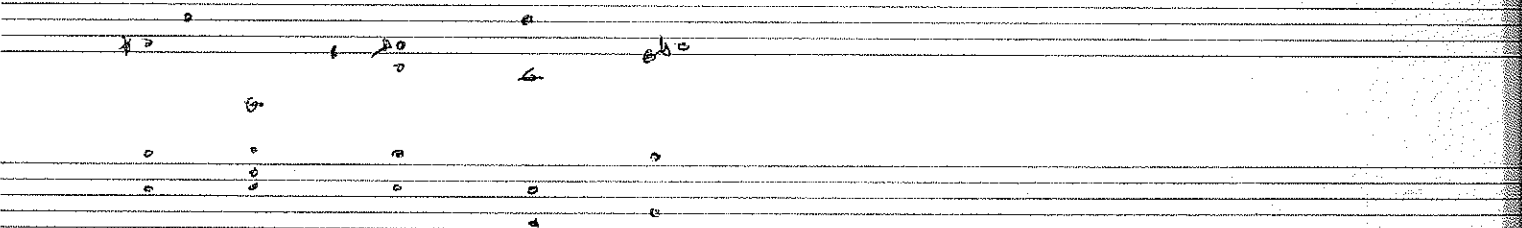
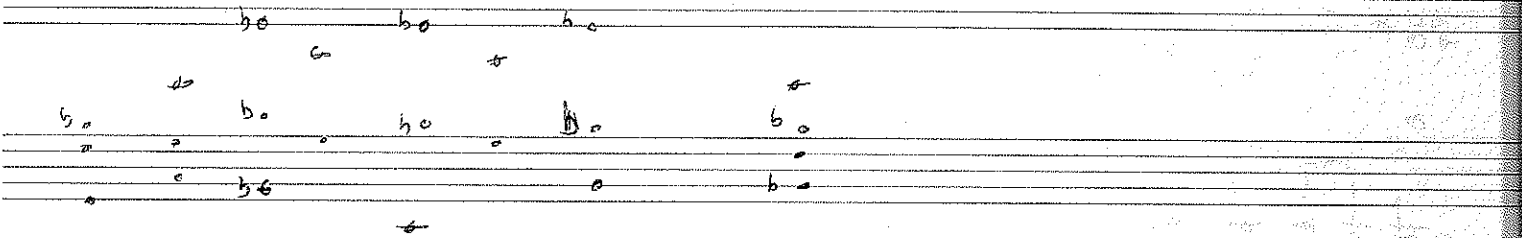
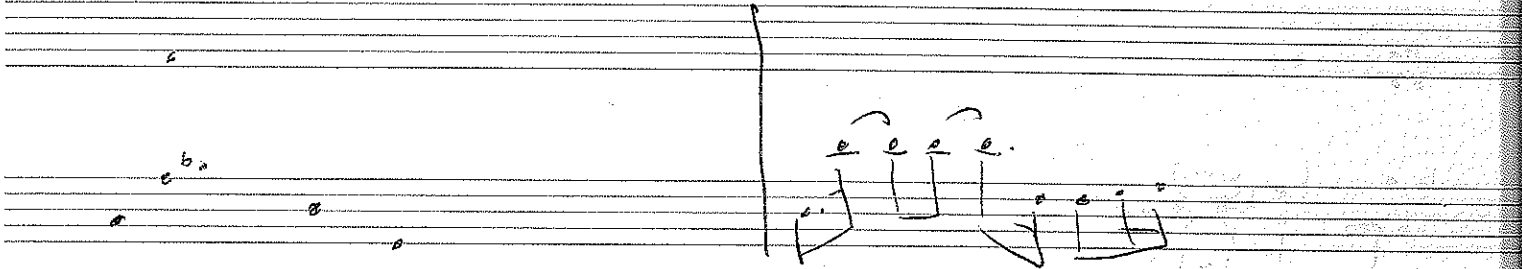
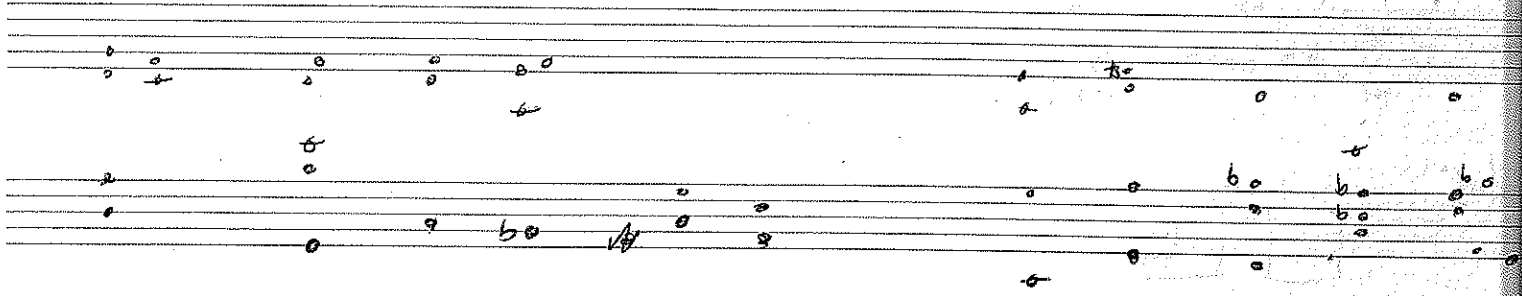
it was better before

but is it still there

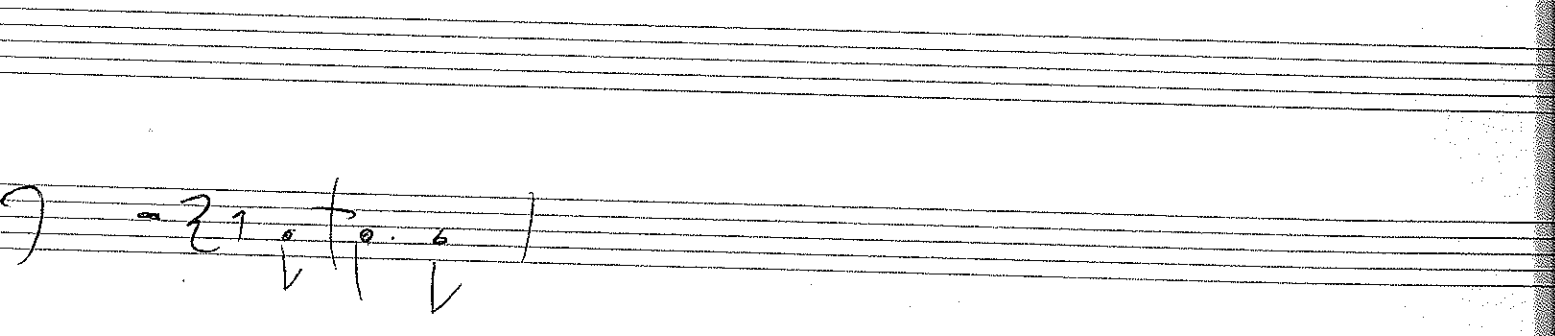
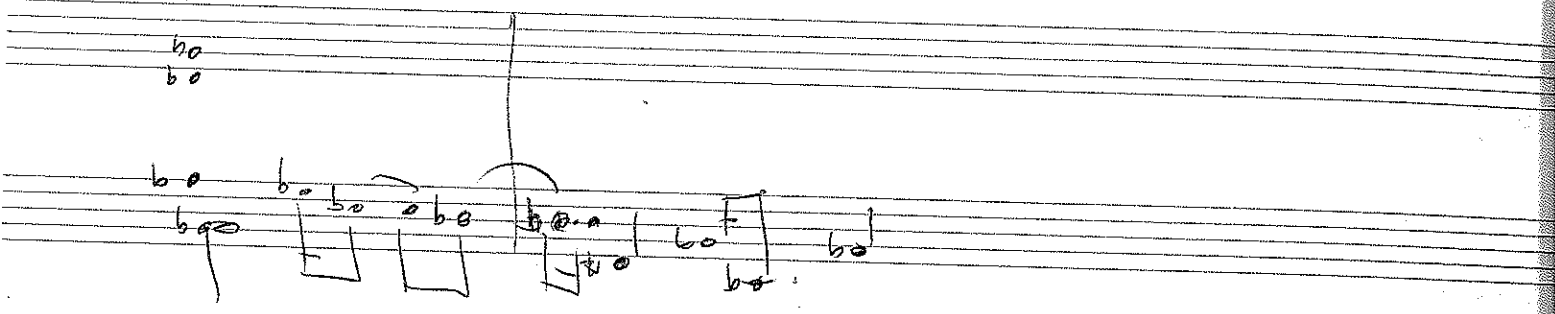
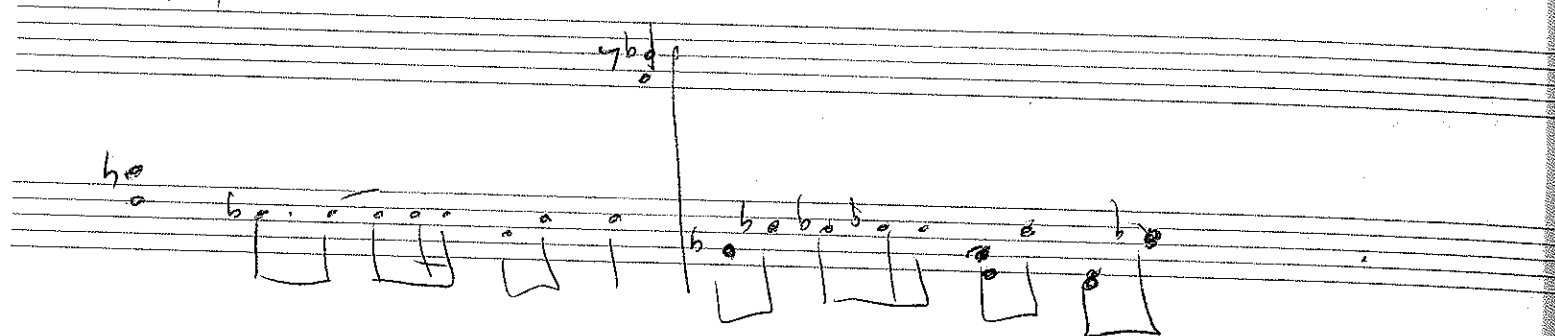
or was that somebody else back then

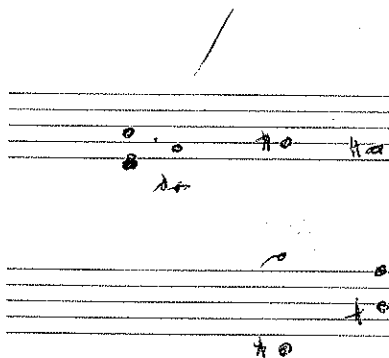
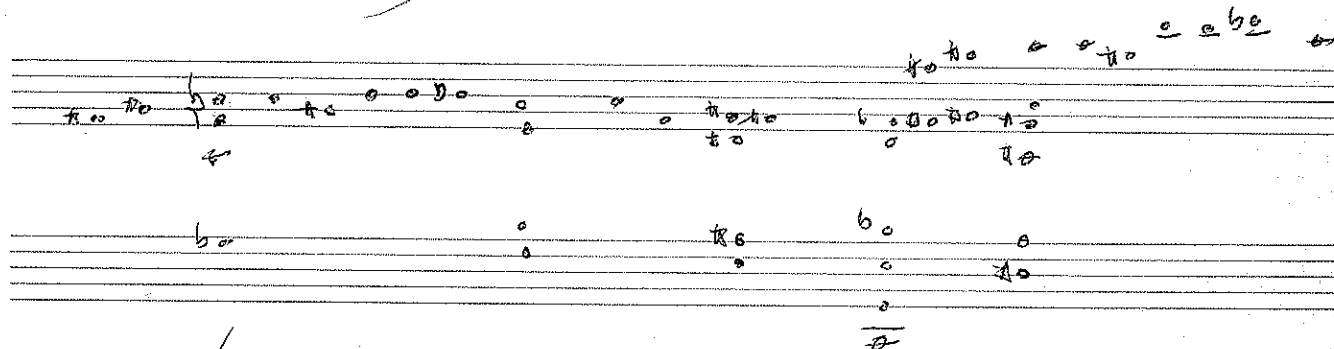
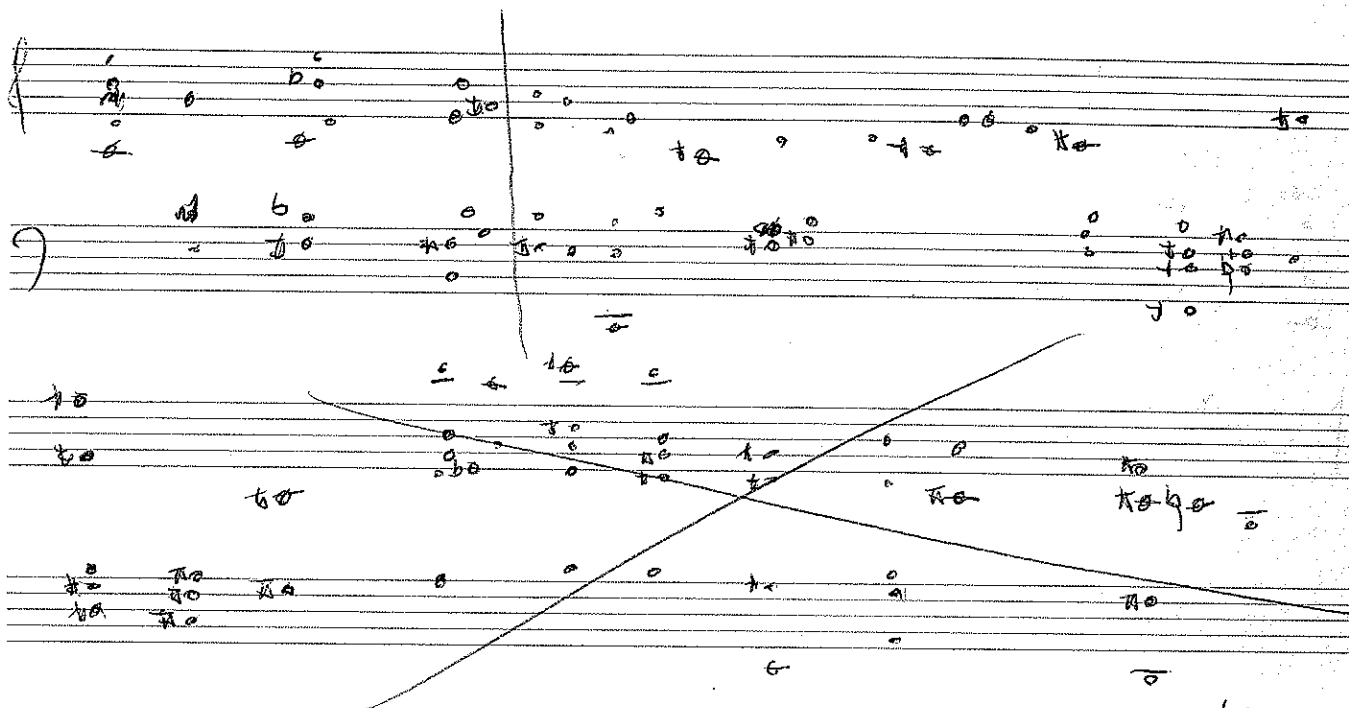
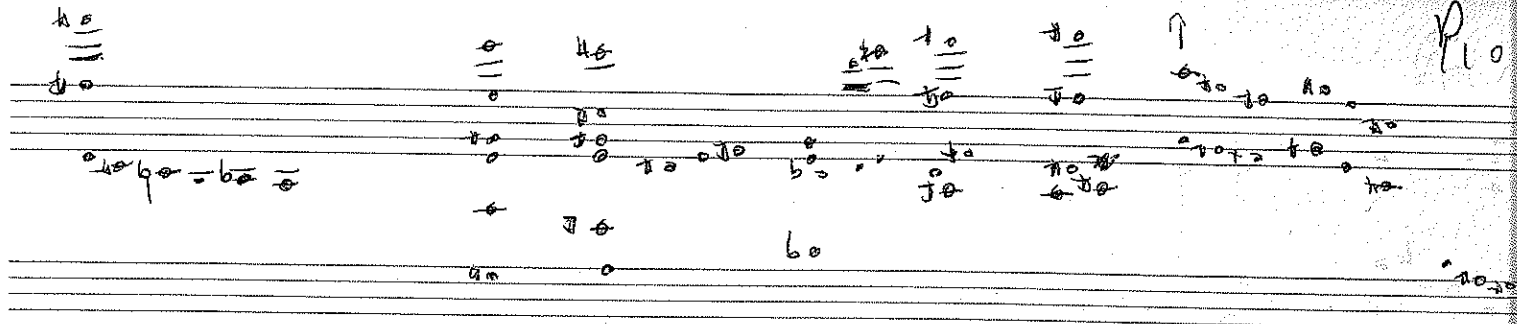
is it now

26 dec



pg





R1

Handwritten musical notation on a five-line staff. It features several measures with notes, some marked with flats (b) and accidentals. There are also some handwritten symbols like '7' and '6' below the staff.

Handwritten musical notation on a five-line staff, showing notes and accidentals.

Handwritten musical notation on a five-line staff, featuring a sequence of chords: F#7, C, F#7, F7, E7, A#7, F#7, and F#7/E.

Handwritten musical notation on a five-line staff, showing a melodic line with notes and accidentals.

Handwritten musical notation on a five-line staff, featuring a complex section with many notes, accidentals, and a large scribbled-out area.

Handwritten musical notation on a five-line staff, showing a few notes and accidentals at the bottom of the page.



P. 13

